



The Dreamcatcher

Southwind Drilling Newsletter • Issue 9 • January/February 2017

LEAD POISONING

3

DOVER DRILLING

4-5

THE SAFETY BLOG

6

SOUTHWIND EFFICIENCIES

7

#DAYS WITH NO LOSS TIME ACCIDENT

7

CROSSWORD CONNECTION

8

OIL UPDATE

9

GRAPHS

10



What is in this issue of the Dreamcatcher?



VISIT OUR WEBSITE @
SOUTHWINDDRILLING.COM

LEAD POISONING

Objective: To educate employees about lead poisoning, including common routes of entry into the body, symptoms of lead exposure, and medical treatment

Despite its high toxicity, lead remains a common material in numerous industries. Overexposure to lead can lead to lead poisoning. This involves the accumulation of lead in the body, leading to interference with normal functions and development, involving a number of different organ systems within the body.

Routes of Entry

Lead is primarily introduced to the body via: Inhalation, when the air contains lead dust or fumes.

- Ingestion, when lead-contaminated materials, including food, beverages, cosmetics, and tobacco products enter the body via the mouth.

Symptoms

- Abdominal pain, vomiting, and constipation
- High blood pressure
- Joint or muscle pain
- Declines in mental functioning
- Pain, numbness, or tingling of extremities
- Headaches
- Memory loss
- Mood disorders
- Fertility issues in both men and women, including harm to fetuses



Lead in Children

The human body is unable to distinguish lead from calcium, which makes lead especially dangerous in the still-developing bodies of children. It can cause permanent harm to bones, muscles, and the brain during fetal development, as well as hamper future development in children.

Treating Lead Poisoning

Lead can take anywhere from months to decades to leave the body on its own. Treatment may vary depending on the severity of the case: patients with lower lead levels may simply need to avoid further exposure to lead, while more severe cases may require chelation therapy or other medical treatments.

If you think you may have lead poisoning, seek medical attention immediately.

Dover Drilling

"A Beginning and an End"

When Floyd Griffith decided to start his own oil drilling business in Ellinwood in 1952, he knew it would not be easy to succeed. It would take working knowledge of the field, which he felt he had; there was plenty of competition, which he would have to meet; it would take money, which he didn't have. Without the money, the idea was only a pipe dream.

The Griffith family came to Ellinwood in 1932, when Floyd was five years old. It was here that he started first grade. His father was a rotary driller for Hendon Drilling, and Floyd grew up knowing that the life of an oilfield worker was not an easy one. He was well aware that the hours are long, the weather, summer and winter, is always a factor, but the rewards can be worth the sacrifices.

Floyd's first job was caddying for Fred Wolf at the newly established Grove Park Golf Course, and the gold bag was almost as tall as he. By the time he was 13, he had graduated to man's work— driving truck for Tiny Thompson and picking up odd jobs on drilling rigs from Frank Kincaid, Stevens Well, or any other service company needing a willing hand. He learned something from each of them, and is quick to give them credit for being willing to take on a green kid and to teach him responsible work habits.

When he graduated from high school in 1945, World War II was still in progress, and Floyd joined the Marines. After serving his country, Floyd returned to Ellinwood, and again chose the oilfield, gaining experience, making contacts which would serve him well in later years.

Money. Where do you get money? If you lived in Ellinwood in 1952, your first thought was to talk to banker Milt Isern. Isern knew the oil business, and he had watched Floyd grow up, observing his willingness to work hard and learn the ropes. He listen to Floyd's dreams and plans, and at the end of the interview he said, "The bank will loan you the money to buy the rig you have in mind. We will take the rig as collateral, with no down payment required. Just pay us back, whether the deal works or not." Thus was born "Dover Drilling."

Why did a man named Griffith christen his business "Dover Drilling?" Why not "Griffith Drilling?" Floyd explained. "Griffith isn't the easiest name to spell or to remember. It's easily confused with similar names. I wanted a name which would be easy to remember, one which would stick in customers' minds. In 1952, everyone in the country knew and loved the song 'White Cliffs of Dover' and from that recognition, I chose the name 'Dover Drilling'.



DOVER DRILLING: An S-43 Walker-Neer cable tool rig, 1965. Leland Mall and George Axelson are pictured.

BLAST from the Past!

With the purchase of a used cable tools outfit— an old Franks 5000 skid rig— Floyd embarked on a 24-hour a day operation. He did it all; he hustled locations, ran a drill bit business on the side, and was chief engineer and bookkeeper.

His energy paid off. By 1959, he bought his first new rig, an S43 Walker-Neer, out of Wichita Falls, Texas. By this time, Walter Roth was his bank loan officer, and because of an excellent repayment record, Walter approved the new purchase without hesitation. In the next couple of years, Floyd purchased two more new rigs. The major oil companies were busy throughout the state; the independents were busy, and even with crude prices hovering around \$3 a barrel, everyone involved was making money.

By 1970, Floyd was operating four rigs scattered throughout the state. He remembers one time when he had a rig at Harper, another at Ness City, one at Glade, near Phillipsburg, and another south of Ellinwood. The cable tools, used for workovers and completions, were busy constantly, with a total of 16 persons on the payroll.

This activity gave Floyd a broad view of the strengths and weaknesses of the Kansas oil scene, and he was tapped for board membership in KIOGA, IOCC, API, and other organizations promoting the industry as a whole. It was through his recommendations, voiced to his brother, Jerry, a state representative from Derby, that the state labor lien laws are now extended to six months for the oil industry only, instead of the four months which applies to other businesses.

It was Floyd's insistence that KIOGA take steps to preserve some of the history of the Kansas oilfields which resulted in the publications of the books "Fire in the Rock" by Craig Miner.

In addition, he was aware of the shortage of skilled help in the oilfield during the boom years, and was instrumental in introducing the teaching of oilfield related courses into the curriculum of several junior colleges.

Floyd felt an obligation to serve not only the industry, but his home town. His philosophy was that those who gain from a community have a duty to give back to that community, and he was a leader and a supporter of all local enterprises, including serving on the city council, the American Legion, and Ellinwood Area Enterprises. It was he who instigated and promoted wristwrestling at the After Harvest Festival, earning Ellinwood the title of Wristwrestling Capital of Kansas, as well as fame through participation in the world championship wristwrestling events as Petaluma and Las Vegas.

The 1980s began with record high prices for crude, then plummeted to \$10 a barrel, bringing serious troubles to most segments of the oilfield. Dover Drilling, through good management practices developed over a 30-year period, stayed active and solvent. Floyd, however, decided that the time had come to close out the business and to relax and enjoy some leisure, a commodity which had been in short supply during his business years. There was no one to carry on the family business; his son Craig, after working in the field during high school vacations, had said, "Dad, would you mind if I did something else? I just don't like the oil business very much." That's fine, son," Floyd replied. "I have great respect for the person who does his job well, no matter what that job is."

Accordingly, in September of 1990, Dover Drilling held one of the largest auctions ever held in this part of the state. Everything was sold— rigs, equipment, tools, and an assortment of memorabilia accumulated through the years.

With the exception of an empty yard and storage buildings on E. Santa Fe, Dover Drilling is no more. But for a period of almost 30 years, its star shone brightly on the Ellinwood scene.

The Safety Blog

Influenza Virus—Preventing the Spread

Influenza (commonly known as the flu) is a serious contagious disease that can lead to hospitalization or even death. Prevent its spread and minimize its potential impact with the following steps.

Flu prevention measures: Wash your hands frequently with soap and water. If soap and water are not available, use an alcohol-based hand rub. Avoid touching your eyes, nose or mouth to limit the spread of germs. Limit close contact with others who are ill. Cover your nose and mouth with a tissue when you cough or sneeze. Get a flu shot or a nasal-spray vaccine.

Flu treatment: If you become ill, limit your own contact with others. If you are experiencing flu-like symptoms, the CDC recommends staying home for at least 24 hours after your fever has normalized without the use of fever-reducing medicine. However, leaving to get medical care or other necessities may be a necessary exception. Anti-viral drugs have been proven to be helpful in lessening the symptoms and length of the time you are sick. If medications have been prescribed, make sure to take them as directed. The best protection from the flu is to get vaccinated every year.



Southwind Rig Efficiencies Overall 2017



	Footage Rate/ Hr	Rig Efficiency	Trip Time	Rig Repair (Hours)	Non-Billable Hours	# of wells
Rig #1	49.72	82%	2292.00	9.50	64.00	1
Rig #2	Under Refurbishment					
Rig #3	52.53	87%	2307.00	5.50	170.50	5
Rig #6	Stacked					
Rig #8	48.61	75%	2205.85	15.75	74.75	1
Rig #9	Stacked					
Rig #70	Under Refurbishment					

#Days Since NO Loss Time Accident

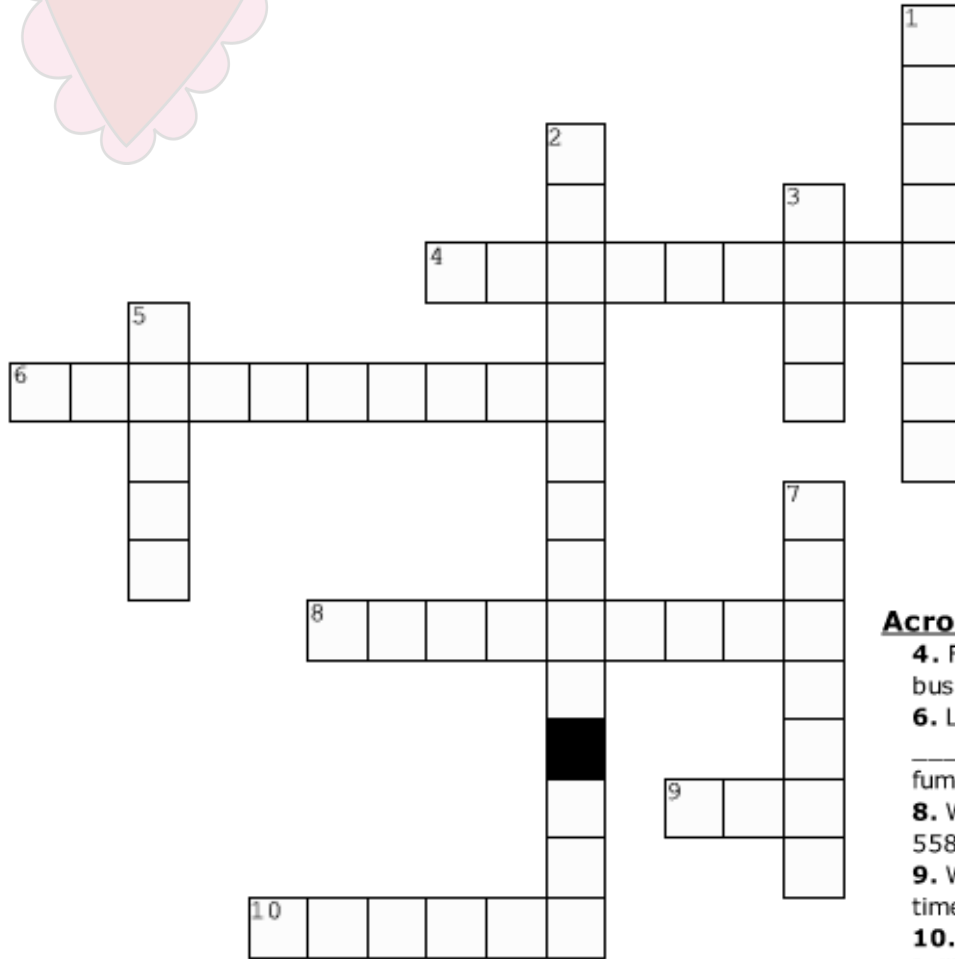
Rig #1 - 907 Days (12/6/2013)

Rig #3 - 136 Days (9/27/2016)

Rig #8 - 511 Days (9/18/2015)

Truck/Shop - 549 Days (8/11/2015)

THE CROSSWORD CONNECTION



Across

4. Floyd Griffith decided to start his own oil drilling business where?
6. Lead is primarily introduced to the body via: _____, when the air contains lead dust or fumes.
8. What month in 2016 was the U.S. rig count at 558?
9. What rig has gone the most days without a loss time accident?
10. Approximately how many years did Dover Drilling operate for?

Down

1. The human body is unable to distinguish lead from calcium, which makes lead dangerous in the still-developing bodies of whom?
2. What holiday is in the month of February?
3. By 1970, Floyd was operating how many rigs?
5. Which rig has the best overall efficiency for the year so far?
7. Floyd joined the what after graduating from high school?



** Hint: All of the answers are located in the text of the newsletter.

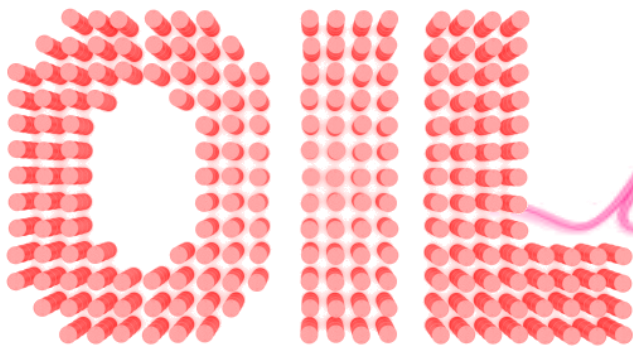
Enter your completed crossword puzzle into our monthly drawing for a chance to win a \$100 gift card. The winner will be announced February 24th. Please either mail in to PO Box 276 or give to your toolpusher. Make sure you send in entire page.
GOOD LUCK!

Name:

Phone:

Rig#, Shop, or Office:

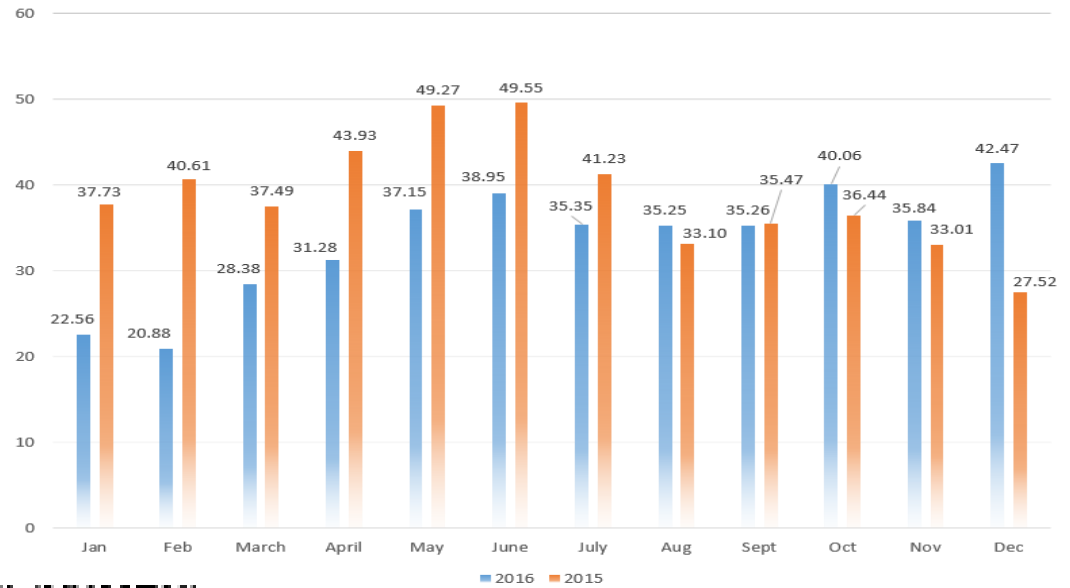
Win a \$100 gift card!



update



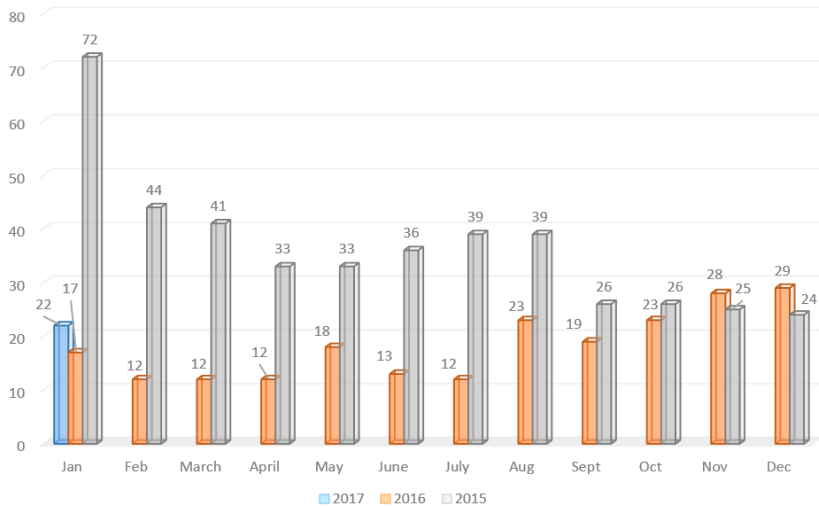
CRUDE OIL PRICES
(KANSAS-COMMON)



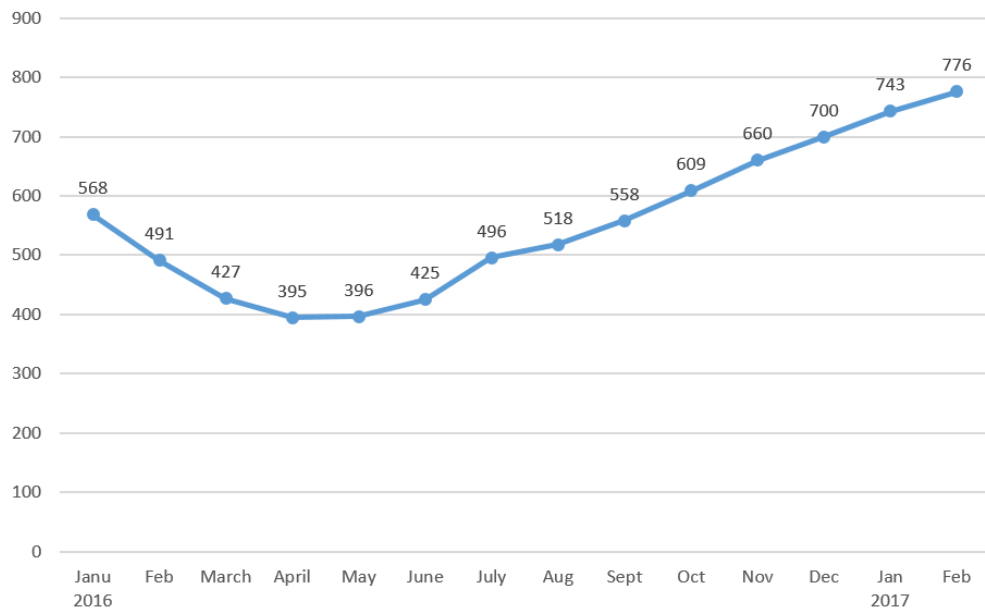
CLH17 - Crude Oil WTI (NYMEX)



Kansas Rig Count (Western Kansas)



U.S. Rig Count



NEW LOCATIONS (WEST RANGES)

